

## For More Information:

**Browser Requirements**

WCM 6 Pro is required to run with a specific version of Google Chrome. To download the compatible browser version, please visit:

[www.signage.dtri.com/wcm6/browser.html](http://www.signage.dtri.com/wcm6/browser.html)

**WCM 6 Pro Online Tutorial**

View the online tutorial will to get started with WCM 6 Pro:

[www.signage.dtri.com/wcm6/tutorial.html](http://www.signage.dtri.com/wcm6/tutorial.html)

**Download Documentation**

Download the latest WCM 6 Pro support documents:

[www.signage.dtri.com/wcm6/download.html](http://www.signage.dtri.com/wcm6/download.html)

**FAQ**

Learn more technical details about WCM 6 Pro:

[www.signage.dtri.com/wcm6/faq.html](http://www.signage.dtri.com/wcm6/faq.html)

**Performance Benchmark Table**

To learn more about each MS appliance playback performance, please refer to the benchmark table:

[www.signage.dtri.com/wcm6/faq.html#D](http://www.signage.dtri.com/wcm6/faq.html#D)

**System Recovery**

If the operating system is corrupted, please follow instructions to restore OS and applications:

[www.signage.dtri.com/wcm6/recovery.html](http://www.signage.dtri.com/wcm6/recovery.html)

**MS600H/ MS1600S/ MS2800S****BASIC OPERATION GUIDE****ENGLISH****Introduction**

Thank you for acquiring the DT Research Multi Screen Appliance. The Multi Screen Appliance facilitates the creation of a unique and powerful communications medium that offers unparalleled opportunities to capture an audience's attention at key decision-making locations. The DT Research Multi Screen Appliance enables efficient deployments for digital signage, with reliable hardware features and innovative server-based software. The Microsoft® Windows®-based Appliances offers remote management of the devices and the displayed content with the WebDT Content Manager. The DT Research Multi Screen Appliance together with the WebDT software suite offers an effective solution for delivering and managing messages that target audiences in the right place, at the right time.

**Package Contents**

1. One DT Research Multi Screen Appliance
2. One power cord
3. Mini DP to DP/ HDMI/ DVI adapters
4. WebDT Content Manager 6 Pro installation DVD
5. Documentation

**NOTE:** The actual package contents may vary depending on the configuration acquired.

## Connecting Peripherals

### MS600H

Make sure your monitors are connected to the MS600H with video cables. For the 6 display outputs, use the 4 ports on the graphic card and choose 2 display outputs on the motherboard. After the peripherals are well connected, plug the power cord into the MS600H and insert the other end into a power outlet.

### MS1600S/ MS2800S

Make sure your monitors are connected the MS1600S/ MS2800S with suitable cables. After the peripherals are connected, plug the power cord into the MS1600S/ MS2800S and insert the other end into a power outlet.

**NOTE:** DO NOT connect the power cord before connecting all cables to the MS Appliance.

**NOTE:** Make sure the power supply switch is on before you power on the system.

## Using Cable Extenders

To be compatible with the MS Appliance, the extenders should be with EDID management function. Once you make sure the display issues are due to the video cable extenders, please contact your local reseller or system integrator to recommend verified extenders to you.

## Powering ON and OFF

The Power Button is located on the front of the MS Appliance.

To turn the MS Appliance on, push and release the Power Button on the front bezel. The power LED will be lit (blue), and the corresponding interface will be shown on the display monitors.

To turn off the device, use the software shutdown interface provided.

If your MS player hangs up, please restart it from WCM or RDP rather than pressing the power button to restart, otherwise the OS may become corrupted.

## Connect Player and Register to WCM Server

When you power on your Multi Screen Appliance, the registration dialog will be launched automatically. You can also launch it from **Start | All Programs | DT Research | WebDT Signage Player | Register Player Again**.

**NOTE:** If your signage player is located in a LAN with a WCM server, the player will automatically register to the server in the same LAN.

### Registration Information:

**Player name:** Leave default name or give a new name

**Group name:** If you did not create a group in WCM server yet, leave it blank now

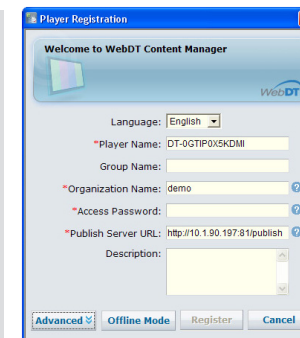
**Organization name:** my site (default)

**Access Password:** 123456 (default)

**Publish Server URL:**

http://(server IP address): (port number)/publish

or, http://localhost: (Port number)/publish



- To exit the full screen introduction, press “Ctrl+Shift+Space” to exit the WebDT Signage Player.
- To re-launch the WebDT Signage Player, navigate to Start | All Programs | DT Research | WebDT Signage Player | Start player.
- To register this signage appliance to another WebDT Content Manager Server, navigate to Start | All Programs | DT Research | WebDT Signage Player | Register Player Again, and then the Player Registration dialog will be launched. Fill in all fields to register. Click OK to register and connect to the preferred WebDT Content Manager Publish Server.
- Please refer to documentation included in the DVD of your package to start managing your content, playlists and schedules via WebDT Content Manager.

## Multiple Screen Layout Designer/ MS Quick Start Guide

DT Research provides this tool to help you adjust the screen layout. Multiple Screen Layout Designer can be installed on a PC or laptop to manage the screen layouts of the Multi Screen Appliances in the same LAN. You can install this application and view the Quick Start Guide from the WCM DVD or download the Multi Screen Appliance Quick Start Guide from:

[www.signage.dtri.com/download/quick\\_start\\_guides/WCM6\\_Pro\\_Multi\\_Screen\\_Appliance\\_Quick\\_Start\\_Guide\\_en.pdf](http://www.signage.dtri.com/download/quick_start_guides/WCM6_Pro_Multi_Screen_Appliance_Quick_Start_Guide_en.pdf)