

For More Information:

Browser Requirements

The WCM 6 Pro is required to run with a specific version of Google Chrome. To download the compatible browser version, please visit:

www.signage.dtri.com/wcm6/browser.html

WCM 6 Pro Online Tutorial

The online tutorial will help you to get started with WCM 6 Pro quickly and easily, please visit:

www.signage.dtri.com/wcm6/tutorial.html

Download Documentation

Download the latest WCM 6 Pro supporting documents from:

www.signage.dtri.com/wcm6/download.html

FAQ

Learn more technical details about WCM 6 Pro from:

www.signage.dtri.com/wcm6/faq.html

Performance Benchmark Table

To learn more about each MS appliance playback performance, please refer to the benchmark table from:

www.signage.dtri.com/wcm6/faq.html#D

System Recovery

If the operating system is corrupted, please follow our instructions to restore your OS and applications:

www.signage.dtri.com/wcm6/recovery.html

MS400LC/ MS600L/ MS600H/ MS1600L/ MS1600H/ MS2800L/ MS2800H

BASIC OPERATION GUIDE



ENGLISH

Introduction

Thank you for acquiring the DT Research Multi Screen Appliance. The Multi Screen Appliance facilitates the creation of a unique and powerful communications medium that offers unparalleled opportunities to capture an audience's attention at key decision-making locations. The DT Research Multi Screen Appliance enables efficient deployments for digital signage, with reliable hardware features and innovative server-based software. The Microsoft® Windows®-based Appliances offers remote management of the devices and the displayed content with the WebDT Content Manager. The DT Research Multi Screen Appliance together with the WebDT software suite offers an effective solution for delivering and managing messages that target audiences in the right place, at the right time.

Package Contents

1. One DT Research Multi Screen Appliance
2. One power cord
3. WebDT Content Manager 6 Pro installation DVD
4. Documentation

NOTE: The actual package contents may vary depending on the configuration acquired.

NOTE: Depending on display video inputs selected, please choose one of the following adapters from our optional accessories to connect the screens and the appliances:

- ACC-012-11 - Mini DP-Male to DVI-Female Active Adapter with Screws
- ACC-012-12 - Mini DP-Male to HDMI-Female Active Adapter with Screws
- ACC-012-13 - Mini DP-Male to DP-Female Adapter with Screws

Connecting Peripherals

MS400LC

Make sure your monitors are connected the MS400LC with video cables. For the 4 display outputs, use the 2 ports on the graphic card and choose 2 display output on the motherboard. After the peripherals are well connected, plug the power cord into the MS400LC and insert the other end into a power outlet

MS600L/ MS600H

Make sure your monitors are connected to the MS600L/ MS600H with video cables. For the 6 display outputs, use the 4 ports on the graphic card and choose 2 display outputs on the motherboard. After the peripherals are well connected, plug the power cord into the MS600L/ MS600H and insert the other end into a power outlet.

MS1600L/ MS1600H/ MS2800L/ MS2800H

Make sure your monitors are connected the MS1600L/ MS1600H/ MS2800L/ MS2800H with suitable cables. After the peripherals are connected, plug the power cord into the MS1600L/ MS1600H/ MS2800L/ MS2800H and insert the other end into a power outlet.

NOTE: DO NOT connect the power cord before connecting all cables to the MS Appliance.

NOTE: Make sure the power supply switch is on before you power on the system.

Using Cable Extenders

To be compatible with the MS Appliance, the extenders should be with EDID management function. Once you make sure the display issues are due to the video cable extenders, please contact your local reseller or system integrator to recommend verified extenders to you.

Powering ON and OFF

The Power Button is located on the front of the MS Appliance.

To turn the MS Appliance on, push and release the Power Button on the front bezel. The power LED will be lit (blue), and the corresponding interface will be shown on the display monitors.

To turn off the device, use the software shutdown interface provided.

If your MS player hangs up, please restart it from WCM or RDP rather than pressing the power button to restart, otherwise the OS may become corrupted.

Connect Player and Register to WCM Server

When you power on your Multi Screen Appliance, the registration dialog will be launched automatically. You can also launch it from **Start | All Programs | DT Research | WebDT Signage Player | Register Player Again**.

NOTE: If your signage player is located in a LAN with a WCM server, the player will automatically register to the server in the same LAN.

Registration Information:

Player name: Leave default name or give a new name

Group name: If you did not create any group in WCM server yet, leave it blank now

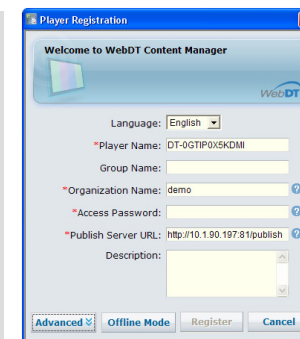
Organization name: my site (default)

Access Password: 123456 (default)

Publish Server URL:

http://(server IP address):(port number)/publish

or, http://localhost:(Port number)/publish



- To exit the full screen introduction, press “Ctrl+Shift+Space” to exit the WebDT Signage Player.
- To re-launch the WebDT Signage Player, navigate to Start | All Programs | DT Research | WebDT Signage Player | Start player.
- To register this signage appliance to another WebDT Content Manager Server, navigate to Start | All Programs | DT Research | WebDT Signage Player | Register Player Again, and then the Player Registration dialog will be launched. Fill in all fields to register. Click OK to register and connect to the preferred WebDT Content Manager Publish Server.
- Please refer to documentation included in the DVD of your package to start managing your content, playlists and schedules via WebDT Content Manager.

Multiple Screen Layout Designer/ MS Quick Start Guide

DT Research provides this tool to help you adjust the screen layout. Multiple Screen Layout Designer can be installed on a PC or laptop to manage the screen layouts of the Multi Screen Appliances in the same LAN. You can install this application and view the Quick Start Guide from the WCM DVD or download the Multi Screen Appliance Quick Start Guide from:

www.signage.dtri.com/download/quick_start_guides/WCM6_Pro_Multi_Screen_Appliance_Quick_Start_Guide_en.pdf