

For More Information:

Browser Requirements

To check browsers and versions supported, please visit:

<https://www.signage.dtri.com/en/WCM/WCM.html>

WCM Online Tutorial

View the online tutorial to get started with WCM:

<https://www.signage.dtri.com/wcm6/tutorial/tutorial.html>

Download Documentation

Download the latest WCM support documents:

<https://www.signage.dtri.com/en/Support/download.html>

FAQ

Learn more technical details about WCM:

<https://www.signage.dtri.com/support/FAQ.html>

System Recovery

If the operating system is corrupted, please follow instructions to restore OS and applications:

<https://www.signage.dtri.com/en/WCM/recovery.html>

SA166CR

BASIC OPERATION GUIDE

ENGLISH



INTRODUCTION

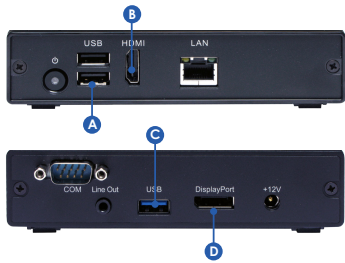
Thank you for acquiring the SA166CR, a Signage Appliance by DT Research. The SA166CR enables efficient deployment for digital signage, featuring reliable, energy-efficient hardware and intuitive server-based software. The Windows® based SA166CR offers remote management of the hardware and the displayed content with the WebDT Content Manager software. The SA166CR together with the WebDT software, offers an efficient solution for delivering and managing messages that target audiences in the right place, at the right time.

Package Contents

1. One SA166CR
2. VESA-compliant Mounting Bracket
3. AC/DC Power Adapter
4. Basic Operation Guide

NOTE: The actual package contents may vary depending on the configuration acquired.

I/O Port



A	USB 2.0
B	USB 3.0
C	HDMI 1920 x 1080 @ 60Hz
D	DisplayPort 1920 x 1080 @ 60Hz

Precautions

- Always exercise care when operating and handling.
- Never disassemble any portion of the enclosure, as this will void any product warranty.
- Do not use any AC/DC adapter other than the one provided with the device or acquired from the manufacturer or its partners.
- In the unlikely event that smoke, abnormal noise, or strange odor is present, immediately power down the product and disconnect all power sources.
- Please report the problem to your device provider immediately.
- Pushing on the Power Button again will restart the appliance.

Powering ON and OFF

The Power Button is located on the back of the Signage Appliance.

To turn the Signage Appliance on, push and release the Power Button on the front bezel. The power LED will be lit (blue), and the corresponding interface will be shown on the display monitors.

To turn off the appliance, use the software shutdown interface provided.

If your Signage Appliance hangs up, please restart it from WCM or RDP rather than pressing the power button to restart, otherwise the OS may become corrupted.

Server Installation

Please refer to the corresponding User Guides for software installation instructions.

Connect Player and Register to WCM Server

When you power on your Signage Appliance, the registration dialog will be launched automatically. You can also launch it from Start | All Programs | DT Research | WebDT Signage Player | Register Player Again.

NOTE: If your signage player is located in a LAN with a WCM server, the player will automatically register to the server in the same LAN.

Registration Information:

Player name: Leave default name or give a new name

Group name: If you did not create a group in WCM server yet, leave it blank now

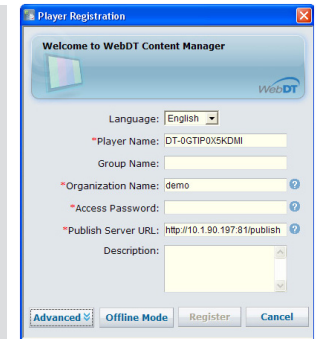
Organization name: my site (default)

Access Password: 123456 (default)

Publish Server URL:

http://(server IP address): (port number)/publish

or, http://localhost: (Port number)/publish



- To exit the full screen introduction, press “Ctrl+Shift+Space” to exit the WebDT Signage Player.
- To re-launch the WebDT Signage Player, navigate to Start | All Programs | DT Research | WebDT Signage Player | Start player.
- To register this signage appliance to another WebDT Content Manager Server, navigate to Start | All Programs | DT Research | WebDT Signage Player | Register Player Again, and then the Player Registration dialog will be launched. Fill in all fields to register. Click OK to register and connect to the preferred WebDT Content Manager Publish Server.
- Please refer to documentation included in the DVD of your package to start managing your content, playlists and schedules via WebDT Content Manager.

VESA Mounting Bracket Installation Guide for SA166CR

The DT Research Signage Appliance package includes a VESA-compliant mounting bracket (1) which mounts the SA166CR (2) onto a VESA-compatible monitor or display.

NOTE: The VESA Mounting Bracket is compatible with most displays and monitors that support the VESA standard.

Step1:

- Locate the existing mounting holes on the monitor.
- Line the bracket holes up with the holes on the back of the monitor, as pictured.
- Place the screws to hold the mounting bracket in place and tighten the screws (do not over-tighten).

Step2:

- Remove the two M3 screws (3) originally on the SA166CR signage appliance.
- Place the SA166CR (2) on the bracket rail with the interface ports side facing downwards so that the two mounting holes on the appliance are aligned with the existing holes on the rail (see picture).

Step 3:

- Apply and tighten the screws into their original locations and make sure that the bracket and the SA166CR are properly secured.

