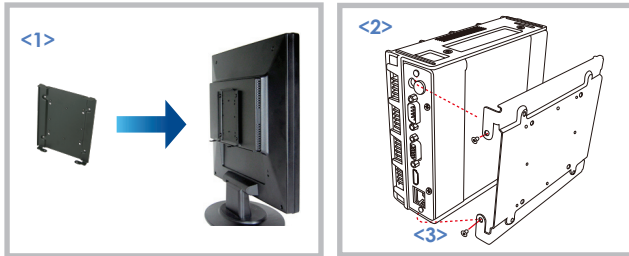


Step 3:

- Apply and tighten the screws into their original locations and make sure that the bracket and the SA3000P are properly secured.

**For More Information:****Browser Requirements**

To check browsers and versions supported, please visit:

www.signage.dtri.com/wcm6/browser.html

WCM6 Pro Online Tutorial

The online tutorial will help you to get started with WCM6 Pro quickly and easily, please visit:

www.signage.dtri.com/wcm6/tutorial.html

Download Documentation

Download the latest WCM6 Pro supporting documents from:

www.signage.dtri.com/wcm6/download.html

FAQ

Learn more technical details about WCM6 from:

www.signage.dtri.com/wcm6/faq.html

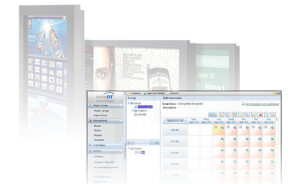
System Recovery

If the operating system is corrupted, please follow our instructions to restore your OS and applications:

www.signage.dtri.com/wcm6/recovery.html

SA3000P

BASIC OPERATION GUIDE



ENGLISH

INTRODUCTION

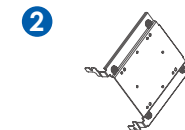
Thank you for acquiring the SA3000P, a Signage Appliance by DT Research. The DT Research Signage Appliance facilitates the creation of a unique and powerful communication medium that offers unparalleled opportunities to capture an audience's attention at key decision-making locations. The SA3000P enables efficient deployment for digital signage, featuring reliable, energy-efficient hardware and intuitive server-based software. The Microsoft® Windows® based SA3000P offers remote management of the hardware and the displayed content with the WebDT Content Manager software. The SA3000P together with the WebDT software, offers an efficient solution for delivering and managing messages that target audiences in the right place, at the right time.



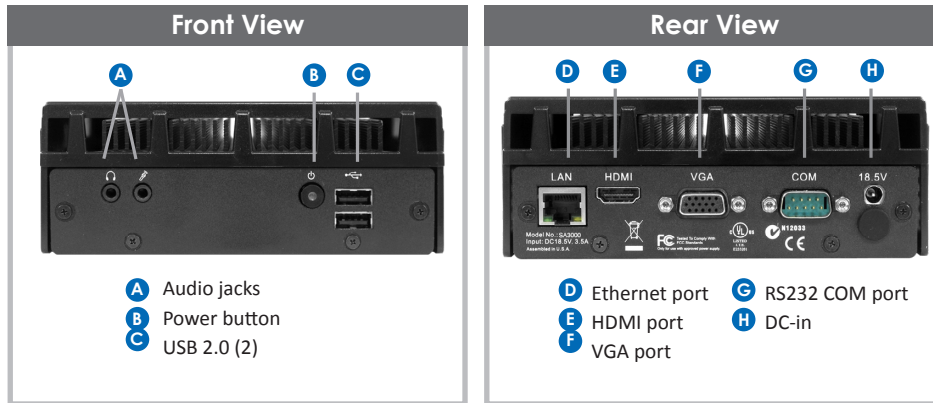
Package Contents

- One DT Research Signage Appliance SA3000P
- VESA-compliant Mounting Bracket
- AC/DC Power Adapter
- WebDT Content Manager 6 Pro installation DVD
- Basic Operation Guide

NOTE: The actual package contents may vary depending on the configuration acquired.



THE SA3000P Signage Appliance



Precautions

- Always exercise care when operating and handling.
- Never disassemble any portion of the enclosure. It will void any product warranty.
- Do not use any AC/DC adapter other than the one provided with the device or acquired from the manufacturer or its partners.
- In the unlikely event that smoke, abnormal noise, or strange odor is present, immediately power down the product and disconnect all power sources.
- Please report the problem to your device provider immediately.

Pushing on the Power Button again will restart the appliance.

Powering ON and OFF

The SA3000P is programmed to Power On automatically when power is first applied or re-established. There is also a Power Button, located on the front of the SA3000P. To turn the SA3000P on, push and release the Power Button on the front bezel. The adjacent power LED will be lit (blue), and the corresponding interface will be shown on the display monitor.

To turn off the device, use the software shutdown interface provided.

In the event of system lockup, unplug or re-plug the power cable. Also, the Power Button may be used to perform a reset of the device. To do that, push and hold the Power Button for at least 4 seconds. The system will shut down and all unsaved work may be lost. Pushing on the Power Button again will restart the device.

Server Installation

Please refer to the corresponding User Guides for software installation instructions.

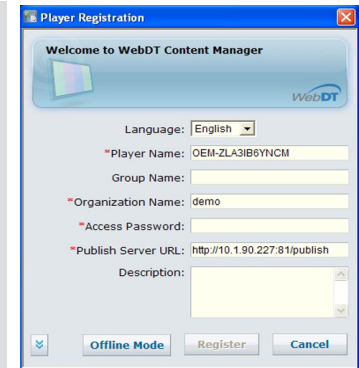
Connect Player and Register to WCM Server

- When you power on your signage player, the registration dialog will be launched automatically. You can also launch it from Start | All Programs | DT Research | WebDT Signage Player | Register Player Again.

NOTE: If your signage player is located in a LAN with a WCM server, the player will automatically register to the server in the same LAN.

Registration Information:

Player name: Leave default name or give a new name
Group name: If you did not create any group in WCM server yet, leave it blank now
Organization name: my site (default)
Access Password: 123456 (default)
Publish Server URL:
 http://(server IP address): (port number)/publish
 or, http://localhost: (Port number)/publish



- To exit the full screen introduction, press “Ctrl+Shift+Space” to exit the WebDT Signage Player.
- To re-launch the WebDT Signage Player, navigate to Start | All Programs | DT Research | WebDT Signage Player | Start player.
- To register this signage appliance to another WebDT Content Manager Server, navigate to Start | All Programs | DT Research | WebDT Signage Player | Register Player Again, and then the Player Registration dialog will be launched. Fill in all fields to register. Click OK to register and connect to the preferred WebDT Content Manager Publish Server.
- Please refer to documentation included in the DVD of your package to start managing your content, playlists and schedules via WebDT Content Manager.

Options

The SA3000P Signage Appliance is designed to work with a range of custom and off-the-shelf options to enhance its applicability for various deployments.

* Internal PCI Express wireless LAN (WLAN) adapters with dipole antenna

VESA Mounting Bracket Installation Guide for SA3000P

The DT Research Signage Appliance package includes a VESA-compliant mounting bracket (1) which mounts the SA3000P (2) onto a VESA-compatible monitor or display.

NOTE: The VESA Mounting Bracket is compatible with most displays and monitors that support the VESA standard.

Step1:

- Locate the existing mounting holes on the monitor.
- Line the bracket holes up with the holes on the back of the monitor, as shown to the right.
- Place the screws to hold the mounting bracket in place and tighten the screws (do not over-tighten).

Step2:

- Remove the two M3 screws (3) originally on the SA3000P signage appliance.
- Place the SA3000P (2) on the bracket rail with the interface ports side facing downwards so that the two mounting holes on the appliance are aligned with the existing holes on the rail (see picture).